

## AKKUINJEKTOR 1

### Properties:

The *AKKUINJEKTOR 1* is a small, light, electrically-driven 1-component injection pump for processing polyurethane and epoxy resins in addition to 1-component foams.



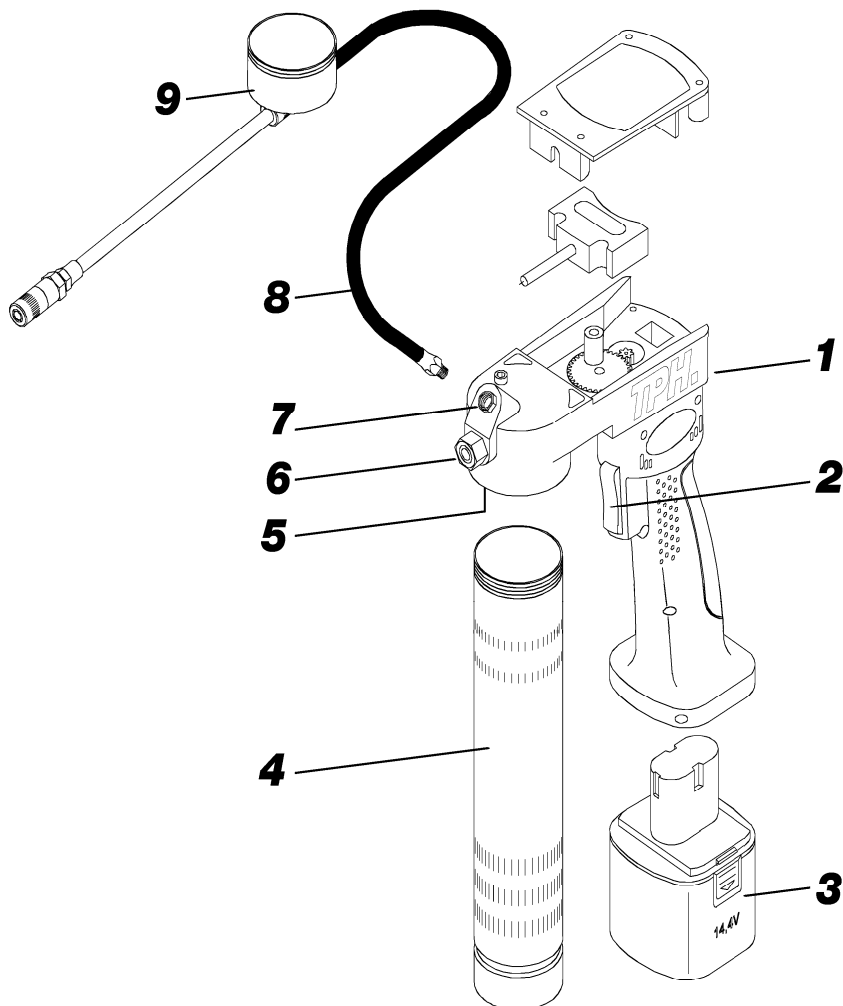
Thanks to its high transport pressure, the *AKKUINJEKTOR 1* is a fully-usable injection device for both minor and medium injection work.

We recommend the use of the *PUR-O-SOLV* or *PUR-O-CLEAN* machine cleaners for cleaning the injection pump after processing.

The *AKKUINJEKTOR 1* is suitable for crack injection, surface injection and horizontal barriers in both concrete and masonry.

### Specifications:

Container contents	:	1000 ml
Working pressure	:	0 - 400 bar
Maximum discharge quantity	:	100 ml/min
Dimensions	:	width 19 x depth 8 x height 29 cm
Container length (1000ml)	:	51 cm
Weight	:	approx. 3.2 kg (with empty container)
Battery power	:	approx. 3 l of injection material or around 25 packers
Length of high-pressure hose	:	0.7 m
Injection head	:	gripping head and pressure gauge
Supplied as	:	pump complete with 2 rechargeable batteries incl. charger
Battery charging time	:	1 hour



Pos.	Designation	Order no.
1	Pump unit cpl. with motor and handle	357819
2	START-STOP switch	357820
3	Battery pack 14.4 volt	357821
4	Container 1000 ml	357822
5	O-ring seal for container	357823
6	Overpressure valve	357824
7	Connectors (may not be removed)	357825
8	750 mm high-pressure hose with gripper mouthpiece	357826
9	Pressure gauge 0 - 400 bar	357827

### Safety instructions:

Nonobservance of the safety instructions can result in both hazards to persons and to the environment and equipment. Nonobservance of the safety instructions can lead to the loss of all compensation claims. The operator of the equipment must ensure that the contents of these operating instructions, especially the safety instructions, have been made available to the operating personnel.

### General information

- The device may not be used in explosion-hazardous areas.
- Protect the device against damage and severe heat input.
- The device may only be operated using the 14.4 V rechargeable batteries originally intended for the device.
- If other rechargeable batteries are used, this can lead to damage to the device or to a fire risk. You must make absolutely sure that unused rechargeable batteries cannot have their contacts bridged.
- The rechargeable battery may only be charged using the charger provided.
- Before charging, ensure that the mains voltage matches the information provided on the device nameplate.
- The ventilation slots on the top and bottom of the charger may not be covered during the charging process.
- Do not recharge the batteries if the temperature is below 0°C or above 40°C.
- Do not charge the batteries in moist or wet surroundings.
- Only dispose of used rechargeable batteries properly in accordance with EU Guideline 91/157/EEC. The rechargeable batteries contain rechargeable NiCd battery cells. If incorrectly used, liquid can discharge from the rechargeable batteries in which case you should avoid contact.
- The pressure limiting valve settings may on no account be changed.
- If the *AKKUIINJEKTOR 1* should become blocked, do not keep the START switch pressed down. This results in a risk of the motor becoming overheated and therefore damaged.
- ☞ Never point the injection hose at people or animals! Injury hazard!!

### Information on preparatory measures / handling

- Observe safety information sheets for all injection materials used.
- Suitable protective gloves and protective goggles must be worn during use.
- When injecting, only hold the high-pressure hose in the vicinity of the mouthpiece.
- Do not bend the high-pressure hose sharply.

### Information on repair / servicing

- The power supply must be disconnected before any repair or maintenance work. The rechargeable battery must be removed from the handle. Disconnect the mouthpiece from the injection location.
- Have the charger checked by an electrician at regular intervals.
- In some cases it is possible that accident hazards will be caused by the use of non-original accessory parts such as hose sections, connecting nipples, rechargeable batteries and charger. No liability can be accepted for accidents and damaged caused by third-party parts.
- Conversion of or changes to the device may only be carried out after consultation with the manufacturer.
- The device operational safety is only guaranteed in the case of correct and proper use.
- Maintenance, inspection and repair work may only be carried out by qualified specialist personnel.
- Caution: hot components only cool down slowly after the device has been switched off.
- Safety-relevant parts such as the pressure limiting valve may only be adjusted or replaced by the manufacturer.

### Correct and proper use / guarantee

The Akkuinjektor 1 is suitable for the filling of cracks and voids in structural elements under high pressure. The low voltage electrical motor is powered by a 14.4 V rechargeable battery. The injector is fitted with a pressure limiting valve to protect against overload.

Any other use, or conversion or changes to the device, is only permissible after consultation with the manufacturer.

If the operating instructions are observed, and if the device is correctly used, we accept liability under the terms of the statutory warranty obligations. If you make any claims on the guarantee, you must include your dealer's invoice and date of purchase.

### Setting up and scope of delivery

The setup including individual components is shown on Page 3.

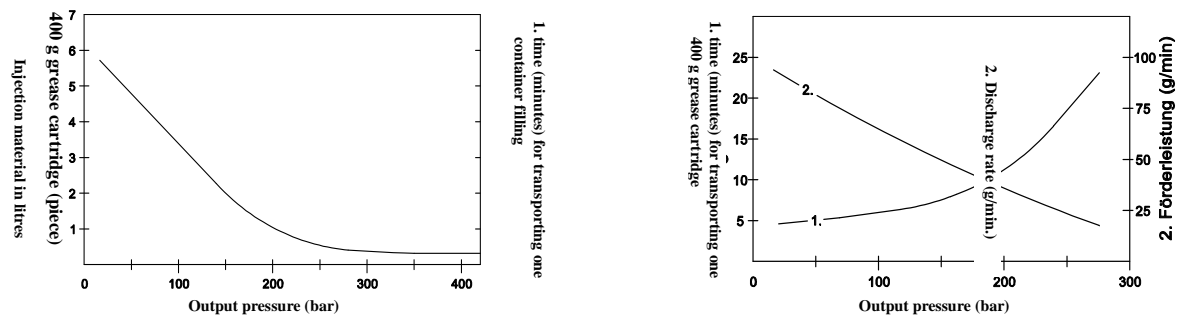
The rotary motion of the electric motor is converted into a reciprocating motion of the high-pressure transport piston via a helical reduction gear unit and a cam. The device transports as long as the switch on the handle is being pressed.

Delivery includes:

**Akkuinjektor 1 set - in stable aluminium case suitable for all slow-reacting injection resins.**

Complete with: 14.4 V rechargeable battery, battery charger with rapid charging function, 750 mm high-pressure armoured hose with 4-jaw hydraulic gripper mouthpiece and pressure gauge

### Performance diagram:



### Initial start-up

The battery must be charged before initial use. A charging time of around 1 hour is sufficient for further use.

To recharge the battery, remove it from the device handle and insert it in the charger.

- Press the SET button on the charger to start the charging process.
- The red ON LED shows that the battery is being recharged.
- The green OFF LED shows that the charging process is complete.
- Fill the Akkuinjektor 1 container with a maximum 1000 ml of injection material. The reaction time of the injection material may not be shorter than 10 min, otherwise there is a danger of blockage.
- Screw the filled container into the device and tighten hand-tight. The Akkuinjektor 1 must now be tilted upwards together with the container and held in an inclined position so that the injection material can run to the transport piston. (min. 15° inclination)
- The injector is now ready for operation.

Press the START switch until injection material is discharged from the mouthpiece.

If the maximum operating pressure exceeds around 400 bar, the overpressure valve opens and allows the injection material to discharge outwards. Abort the injection process and remedy the reason for the high pressure build-up. Possible reasons for this can include damage to the packer nipple, the packer itself may be damaged or blocked or the crack may be completely full.

When using the device, the rechargeable battery temperature will increase. Before charging, allow the rechargeable battery to cool down to room temperature otherwise charging cannot take place.

**Maintenance and care:**

The Akkuinjektor 1 works maintenance-free.

If you have to carry out any service or cleaning work, **never remove the connector**. This is glued to the diecast housing. Any removal through the use of force results in cancellation of the guarantee.

You should inspect the pressure-carrying parts (high-pressure hose) in addition to powered components (charger) at regular intervals for any possible damage or wear. Defective parts must be replaced with original parts immediately.

**Ordering spare parts:**

When ordering spare parts, please include the following information:  
device type, ET designation, order number

It is imperative that the following maintenance deadlines are observed in order to ensure fault-free operation.

	Before each use	annually	To manufacturer's instructions
Overpressure valve			X
O-ring seal	X	X	X
High-pressure hose	X	X	X
Gripper mouthpiece	X	X	
Battery charger	X		X
Check for loosened connections	X		
Legibility and presence of information		X	

**Disposal**



The device must be disposed of in accordance with applicable statutory regulations when it is no longer serviceable.



Parts in contact with grease and rechargeable batteries may not be disposed of in the dustbin!

We have no control over the correct and therefore successful application of our products. A guarantee can therefore only be provided for the quality of our products within the context of our Conditions of Sale and Delivery, but not for successful application. All data and information contained in this Code of Practice are based on current state-of-the-art technology, and we explicitly reserve the right to make revisions and adaptations to the development. The consumption information provided by ourselves is only an average experimental value, variations are possible in individual cases and cannot therefore be excluded by ourselves.

TPH. 301110